

Scanlas 532 Specification

Laser	Diode-pumped solid-state laser 532nm wavelength
Power	10 to 1800mw (at tissue)
Pulse Duration (Single Spot)	0.01 to 3s
Pulse Interval (Single Spot)	0.01 to 3s
Pulse Duration (Pattern)	10ms - 50ms
Microsecond Pulsing (optional)	0.05 - 1.00ms; 5 - 100%, variable duty cycle
Aiming Beam	635nm, 0.1mw continuously variable brightness upto 1mw
Size	300 (L) x 300 (W) X 105(H)
Weight	5 kg – 11lbs
Cooling	Thermoelectric cooler and fan cooled
Power requirement	100 – 240 VAC 50/60 Hz
Optional Accessories	Wireless footswitch, Safety Goggle, 3D mouse, Hand rest.

Delivery System Integrated Laser Slitlamp

Spot Size (Single Spot)	50 µm - 500 µm
Spot Size (Pattern)	100 µm - 500 µm
Patterns	single, line, triangle, square (2x2, 3x3, 4x4, 5x5, 6x6, 7x7), equal spacing (2v2, 3v3, 4v4, 5v5, 6v6, 7v7), circle (single, double, triple), Macular arc (single, double, triple 1\1, 1\2, 3\4), Spot width, density and 360° rotation for each pattern

Laser Indirect Ophthalmoscope

Keeler integrated LED wired / wireless Laser Indirect Ophthalmoscope

Retina Spot Size	1 100µm, 300mm from front face of the LIO
Illumination Power	From Laser console / wireless battery pack
Fiber length	3 Metre
Weight	700g

Laser Ocular Probe

- Straight & Curved
- 20, 23 & 25 Gauge

LASER RADIATION - AVOID EYE OR SKIN EXPOSURE TO DIRECT OR SCATTERED RADIATION

: 532nm, CW/Pulse 0.01s - 3.0s, 2Wmax.
: 635nm, CW, 5mWmax



Disclaimer: Information published in this catalogue is subject to change without notification.

scanlas₅₃₂

Pattern Scan Multispot Laser Photocoagulator



& Sleek Design

im ICON
Medicare

#304-A/2, TNHB, Phase VII, Brindavan Nagar,
HOSUR - 635 109, Tamilnadu, INDIA.
Phone : +91 4344 243313
E-mail : info@iconmedicare.com / www.iconmedicare.com

RETIKARE[®]
FOR VISION

NEW DELHI
Mob.: +91 9944678009

MUMBAI
Mob.: +91 9323284971

BANGALORE
Mob.: +91 8220009934

CHENNAI
Mob.: +91 8144433313

KOLKATTA
Mob.: +91 9842191245

AHMEDABAD - Mob.: +91 9327065024

HYDERABAD - Mob.: +91 9000929890

im ICON
Medicare

RETIKARE[®]
FOR VISION

Green Laser Photocoagulator



Light weight and Compact Design

The space saving design allows portability to virtually any room. The scanlas 532 is very compact powerful of up to 2w an oer a highly stable diraction limited beam

PowerLoQ Power Stability

PowerLoQ uses a fast feedback loop to monitor output power and maintains a highly stable power output that QC tested for over 100 hours. The laser is design to rigorous aerospace standards for use in extreme conditions of temperature and vibration.

The laser is design to rigorous aerospace standards for use in extreme conditions of temperature and vibration.

Remote Connection Capability

Internet connectivity for control, diagnosis and optimization

7" Color LCD Touch Screen Control

7" Color LCD touch screen has intuitive menus with easy selection of patterns and treatment setting

An intuitive graphic user interface and easy to read touch screen color LCD allows quick and easy setup and verication of the scan pattern treatment parameters



Fully Integrated Laser Slitlamp

The optical axes for observation and the laser are coaxially aligned. Coaxial alignment results in precise laser delivery.

Internal clear view safety lters (photopic balanced coating) allow larger eld viewing, undistorted crystal clear view of the retina and eliminates color distortion of the treatment site while optimizing white light transmission or "brightness" of the physician's view.

A fully integrated design provides outstanding control, increased safety, and enhanced clinical exibility.

Laser indirect ophthalmoscope (LIO)

Integrated LIO provides unique controls of aperture size and spot positioning for enhanced, precise viewing.

Independent illumination and laser position control.

Lightweight and comfortable

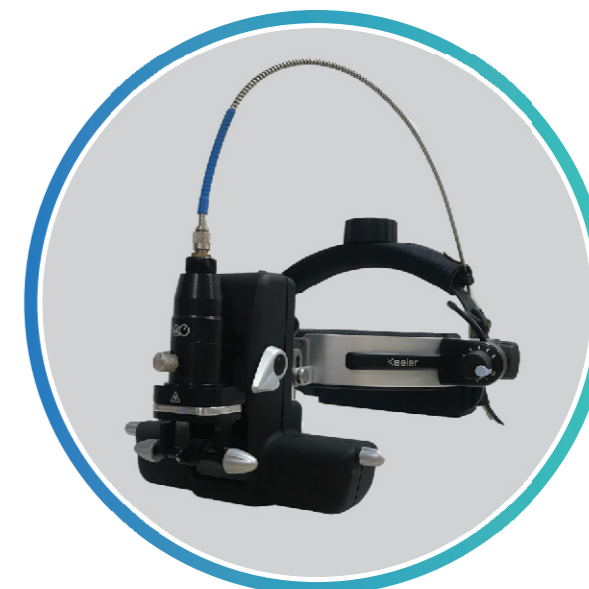
Large or small aperture selection for dilated or non-dilated or small pupils

Multiple illuminations lters available in clear white, cobalt blue, red-free and diused allow physicians to examine and/or treat with superior visualization of the retina.

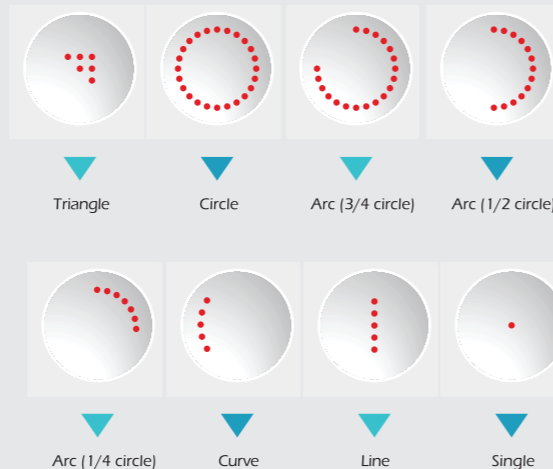
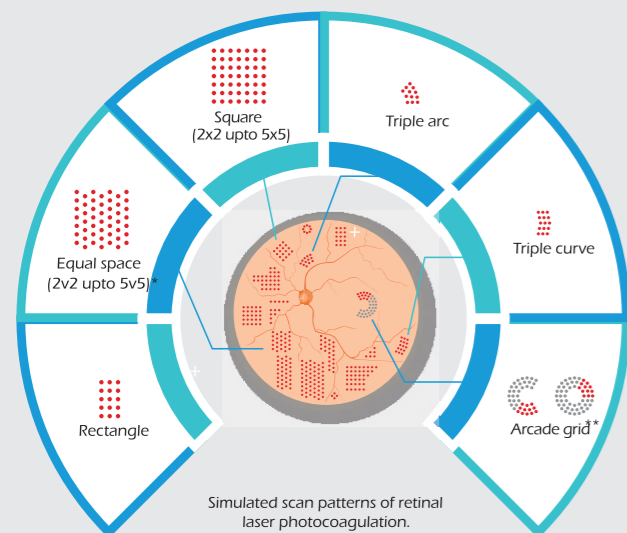
Aperture selections automatically adjusts illumination and viewing mirrors for maximum stereopsis

LED light source oer brighter and whiter illumination for high denition retinal images

Small and lightweight headset battery oers up to 2 hours of use without recharging



Multiple Scan Patterns



* For equal space patterns, No. v No. indicates the number of spots in horizontal and vertical directions.

** The arcade grid pattern is used for treatment of the periphery of macula in quadrants. The inner diameter is xed and spot sizes range from 100 to 200 μ m.

Precision and Control

Short pulse duration (10-20ms)

- Less heat diusion to the retina and choroid
- Targeted burns will less collateral damage to surrounding tissue
- Uniform, predictable pulses

Faster pattern delivery (Full PRP in 1 session)

Precise pattern spacing

- Consistently spaced burns, minimizing overlap

Largest selection of Customizable patterns and sizes

The scanlas 532 has the largest selection of scanning laser patterns designed to aid the treatment of various pathologies enhancing treatment speed safety and convenience.

Parfocal Motorized variable spot size controls with 100 – 500 μ m for pattern scanning mode, 50 - 500 μ m for single spot mode, spot size can be very easily in one touch

Convenient adjustment of treatment pattern for shape spacing, rotation and separation

ENDO ocular Probes



Straight, curved.

Available in 20, 23 & 25 Gauge

Standard SMA connector for convenience of manufacturer choice

Microscope Safety Filter Adaptor



Fixed and Movable safety lter options available to suit vast variety of surgical microscope

Wireless Foot Pedal With Power Control*



Foot pedal allows hands-free operation and uninterrupted procedures for increased visual focus

A simple tap enables adjustment of treatment power settings quickly and easily